



NEW BREMEN NOW & THEN

By Marge and Paul Lietz

This was the first slide show by Marge & Paul and was shown 22 times from 1979 to 1983.



New Bremen is a Canal Town

The Irish and Germans from across the ocean built the canal. They worked with strong backs, weary bodies, always fearing the dreaded diseases from poor sanitation and mosquitoes.



Paul Lietz at an Early Age

Paul was 15 years old when he began to photograph New Bremen. He started with black and white film and did his own developing. We have copied some of his early work and have made them into slides for our shows.



34 South Herman Street

Paul was born here in the southeast room on July 1, 1921.

This house was built by Paul's Grandfather Heil and his Uncle Walter Heil after 1913.



Marge Lietz

This is your narrator. I did all the worrying for the family even at an early age.



Marge's Birthplace on South Franklin Street

This was my Aunt Emma's little house (on the right). It had been a barn. It was moved to the front of the lot, remodeled and it became a home for the young widow and her small son. At one time my parents rented this little house and my mother said that I was the only baby ever born there.



213 South Franklin Street - 1979

This is how Aunt Emma's house looks today.



Old Street Light

We found this old landmark at the end of South Franklin Street on Dr. and Mrs. Rabe's three acres of land. Next door is Leo Wente's farm.



Lantern

Another light of years gone by. This lantern was used by farmers when they did their chores and also by townspeople - before electric lights and modern plumbing.



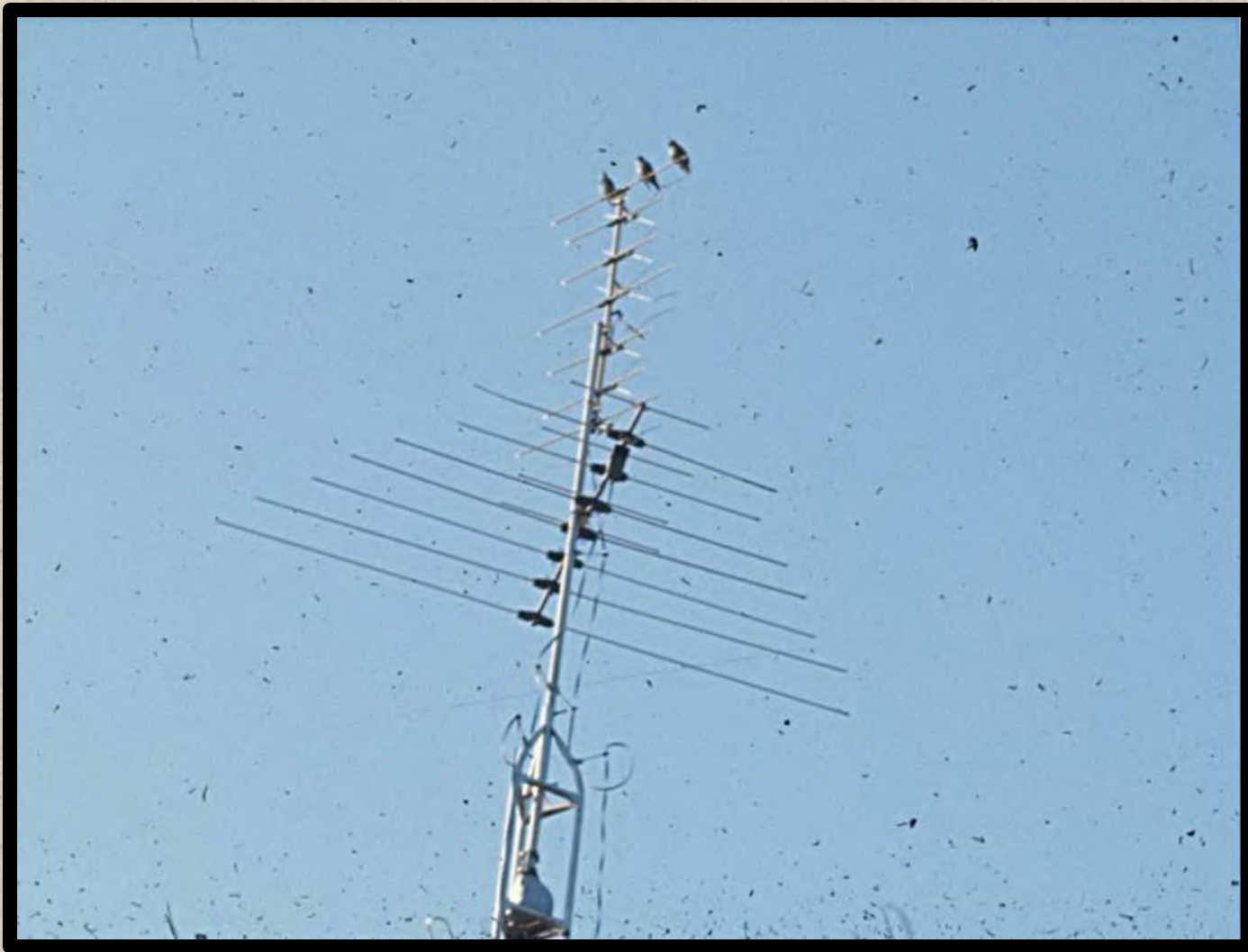
Ida Heinfeld's Barn

Maybe some of you will remember this old barn. The house and buildings were purchased by Home Furniture and the barn was razed a few years ago.



Looking into the Past

The concrete holder of this globe is similar to the products once made at the New Bremen Cement Tile Company. This company was located in the southwest corner of New Bremen near the water works.



A Bird's Eye View of New Bremen

If we could be up as high as these three birds, we could look all over New Bremen.



Aerial View of New Bremen

Here we are looking all over New Bremen.
The blue arrows mark St. Paul Church and the Lietz house.



Looking South on Washington Street

Our look into the past will start on South Washington Street. Brick roads, buildings on both sides of the street and most every business place had an awning to keep out the west sun.



Lithograph of Rabe's Store – 1880 Atlas



Rabe's Store with Art Finke and August Schroeder

Rabe's Store was a hardware-grocery store and sold lamp chimneys, coal oil, stove bolts, stick candy, rope, tobacco plugs, gun powder, and even dynamite. There was a small bar at the back of the store where drinks were sold.



Crown Plant #1 – 1981 (formerly Rabe's Store)



Arcade Department Store – South Washington St. - 1912



Crown (former Arcade Dept. Store)

Remodeled front

New Bremen Now & Then - 1979-1983



Crown – South Washington Street - 1981



Crown at night

New Bremen Now & Then - 1979-1983



Early Arcade

The merger of stores opened in April 1903.
The stores were connected on the inside by huge arched doorways.



Arcade Department Store with Porch

The porch shaded the huge windows that faced the west and invited customers to sit and rest awhile. It also provided a shelter from the rain. It was removed in 1950 at the same time a basement was added.



Arcade Shoe Department

Gas lights furnished the light.

New Bremen Now & Then - 1979-1983



Arcade Department Store

The shelves were piled high with men's clothing. Boxes of caps were on the counter and socks hung on a round circular rack. Note the stacks of blue overalls (now referred to as jeans.)



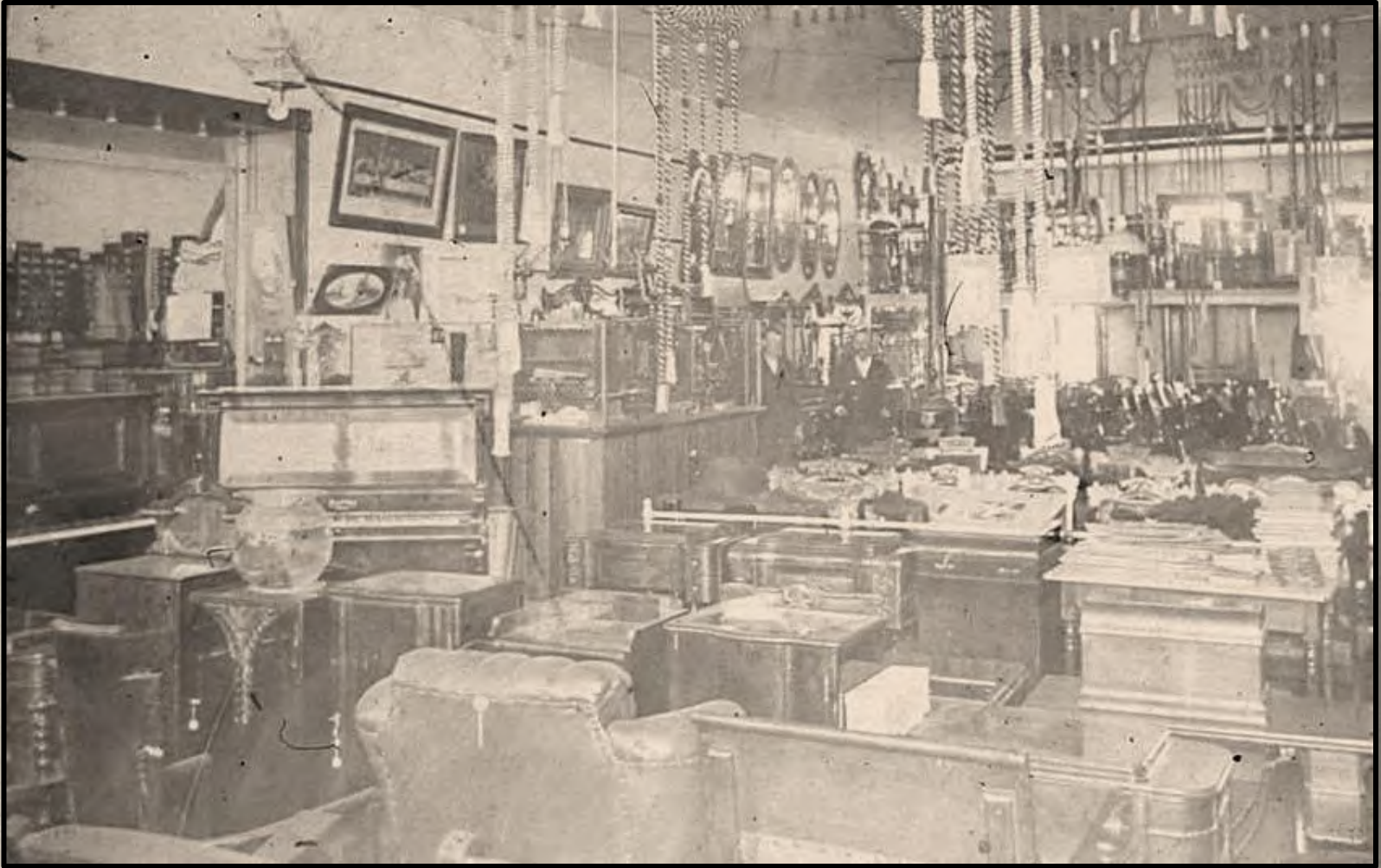
Arcade Department Store Dry Goods

This picture gives us a glimpse of the past. Little round stools that turned on a swivel were furnished for the ladies while they chose material. The clerks wore long white aprons with a pair of scissors on a black ribbon around their neck like a necklace. There was usually a male clerk also in Dry Goods.



Arcade Furniture

The furniture department had a big turnover in business. Note the large stacks of chairs piled on the shelves. Carpet samples were displayed. Ready made carpets were laid on the floor unrolled. This is possibly one of the rooms on the second floor.



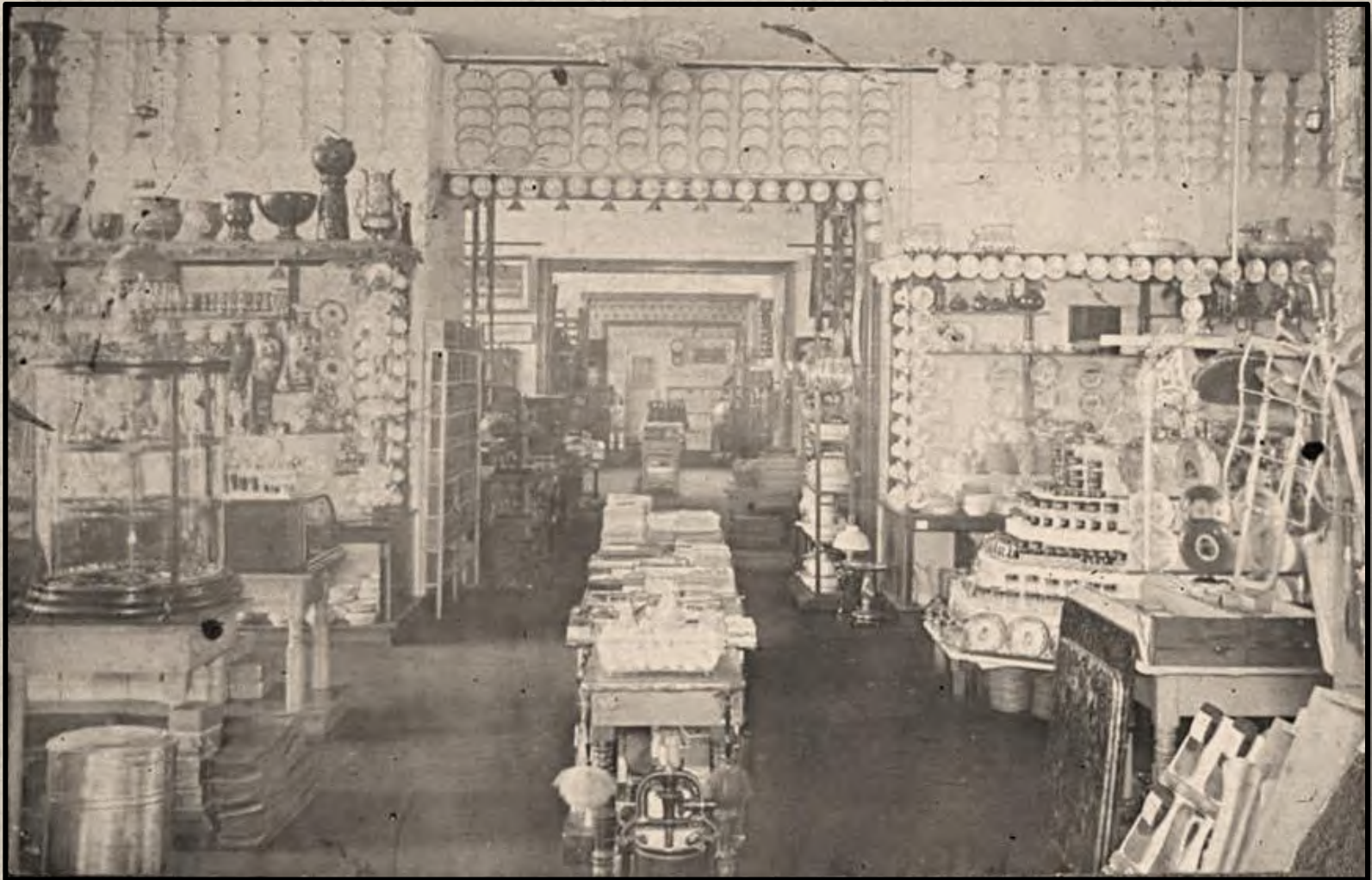
More Arcade Furniture

Pianos, mirrors, drapes, sewing machines, end tables, rocking chairs and ornate hangings for big doors were all for sale at the Arcade.



Arcade Bazaar

The Bazaar Department held many fascinating things. The large ladder which rolled from one end of this department to the other end stayed in the store and was still in use in the early 1950s. The men are Ferd Nieter and Frank Sunderman.



Arcade Bazaar Department

In this view all the arched doorways can be seen. In 1909 the old buildings in the rear of the store were torn down to make way for two large warehouses.



Arcade Grocery

This picture of the Grocery is dear to me. This is the first place I worked. We had sugar and vinegar in barrels. We sacked and weighed all the staples and waited on folks when they came in for their weekly supplies.



Arcade Window Display of New Bremen Blankets

New Bremen Now & Then - 1979-1983



Parade Float Decorated by the Arcade

Wilson Vornholt is the driver. He worked at the Arcade in his younger years and then returned in the 1940s to manage the store for a few years.



The Arcade - 1952

The merger of stores took place in 1903 and in May of 1953 a large sale took place that ended the 50 year life of the store. The building was sold to Crown.



Street Renovation - 1970

Here we see the original brick road during the street repair.
The bricks were all covered in 1934.

New Bremen Now & Then - 1979-1983



Washington Street in June 1971

New Bremen Now & Then - 1979-1983



Washington Street circa 1930s

New Bremen Now & Then - 1979-1983



John Blase Grocery Store

After some years Milton Gieseke became a partner of John Blase. The car you see is a delivery truck. Perishables were purchased sometimes twice a day because there were no refrigerators or freezers. Milton spent a great deal of time delivering groceries to the townspeople. When John Blase retired, the store became known as Heinfeld and Gieseke.



The Little Store

In later years Milton Gieseke sold the store and business to Virgil Hirschfeld. Then the building was empty until Paul Westerbeck opened a wood working shop. It was only a short time and the shop burned. In this photo are Milton Gieseke, Virgil Hirschfeld, Mabel Gieseke and Margaret Luelleman.



Site of “The Little Store” on North Main Street

When Heinfeld & Gieseke dissolved partnership, the store on Washington Street became known as Heinfeld’s Grocery. Milton Gieseke opened The Little Store on North Main Street.



Intersection of Washington & Monroe Sts. - 1981

Looking south we see the gas station, the water tower, and the American Budget building with the twin tower windows.



American Budget & New Bremen Insurance Building - 1981

The building was remodeled in keeping with the original building.



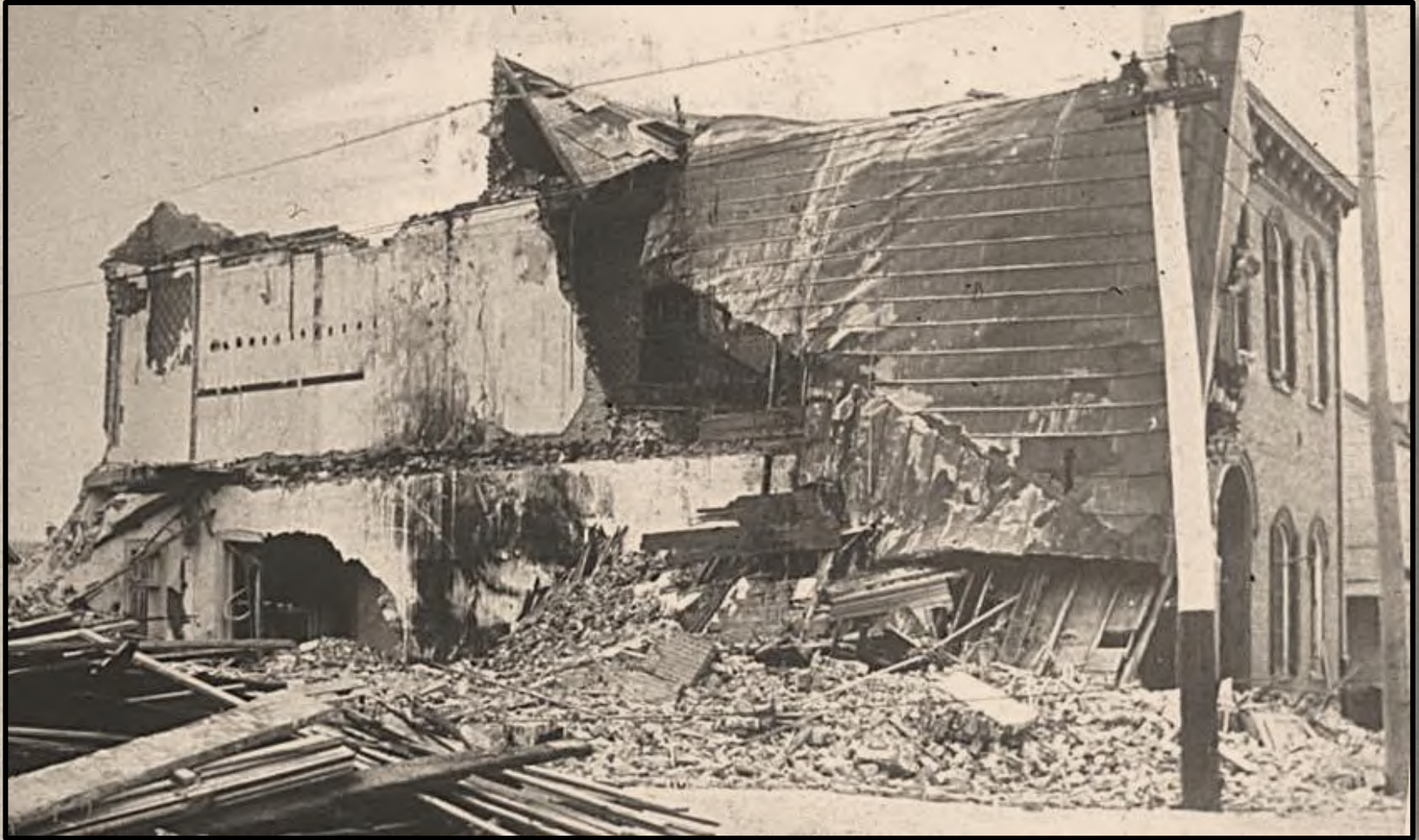
Boesche's Dry Goods

This building stood on the corner where the Marathon gas station is in 1983. Henry Dierker purchased the building in 1903 and opened a Dry Goods Store on the left side of the building. The family lived on the right side.



Dierker Building Explosion - 1905

A terrible gas explosion demolished most of the building. When the two clerks arrived at work that morning, they smelled gas and went to the basement to investigate. It was dark and on impulse one of them lit a match. The explosion rocked the neighborhood.



Dierker Building Explosion

At the time of the explosion all the members of the Dierker family and the clerks were in the building. The clerks were severely burned and the owner was covered with debris leaving only his head, chest and hands free. Everyone was rescued.



New Dierker Building (on right)

Perseverance reigned and Dierkers put up a new building on the same site. The grand opening was in October 1905. My mother came to New Bremen in 1915 and she said that it was a very nice dry goods store.



First National Bank (former Dierker Building)

We remember this building as The First National Bank. The bank was on the left side of the building and a residence was on the right. The Library used the quarters after the bank moved. The white frame building to the right was Ivan Koeper's Shoe Store.

—GO TO THE—
**CITY BOOT <sup>A
N
D</sup> SHOESTORE**
—FOR YOUR—
BOOTS AND SHOES.

We have the most complete line of winter goods, and our customers can find here just what they want. We do a cash business, and can on that account sell cheaper than any other firm in town. Special bargains in rubber goods; we handle the only genuine duck boot. Give us a call.

JOHN A. KOEPER.

Washington St., near Boesche's Store.

3-3

ESTABLISHED 1836.

Koeper Shoe Store

It would appear that New Bremen had a Koeper's Shoe Store for many years. Records show that John A. Koeper was the postmaster in New Bremen in 1904.



Tearing down the First National Bank / Dierker Building - 1970



Fire Department - 1900

In the foreground, Washington Street is a sea of mud and ruts. On the south of the fire station was a saloon and on the north was Joe Lanfersieck's barber shop (later Grover Wissman). The frame building on the far left was the Lanfersieck Plow Shop. The frame building on the right was Ernst Tomhafe's Barber Shop.



Tomhafe's Barbershop

BACK: Eva Tomhafe, Dorothy Dickman Landwehr, Annabelle Dickman Scheer

FRONT: Louise Haines Dietrich and Emma Jane Dickman



Grover Wissman Barbershop

Grover Wissman, better known as Dooley, is giving Lawrence Schroeder a haircut.
Grover and Amanda Wissman had one son, Paul.



Wint's Restaurant

The owner was Ferd Wint, known as Curly, along with his sons LaVerne and Paul.



Wint's Bar

Omer Luedeke is seated at the small table on the left.
The next man is Frank Fullriede who always drove a horse and buggy.



Interurban on Washington Street (looking south)

On the right we see Teddy Doenges's Tire Shop and part of Kuenzel Mills.

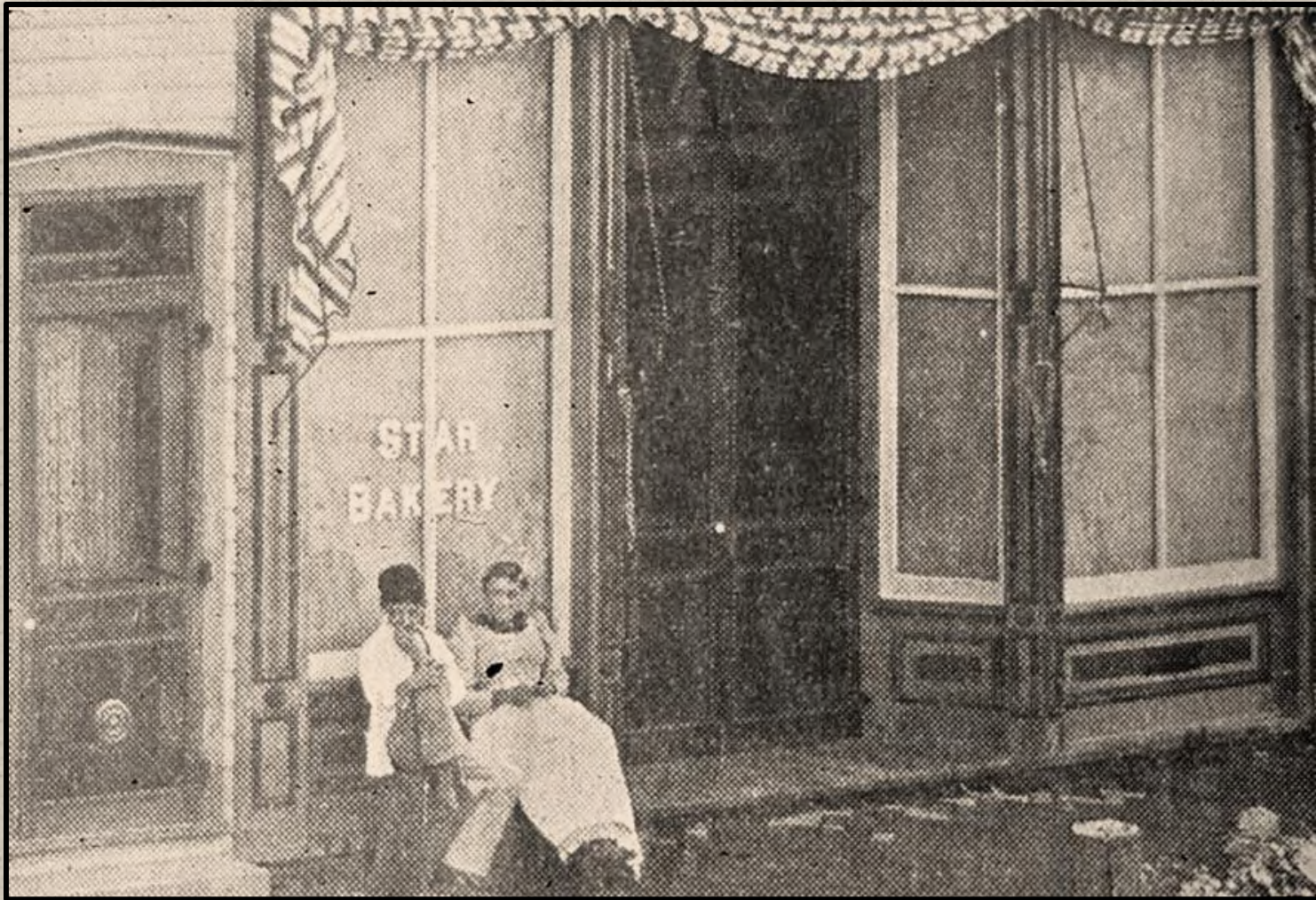
On the left we see the Arcade sign.

Boys are wearing knicker trousers in this photo and the road is paved with bricks.



Looking Down on Washington Street

The small building on the left is Wint's. The middle building was a bakery.
At one time Caddy Moeller had a bakery there. Later it became Knipple's Bakery.



Star Bakery

Above the bakery was Laut's Cigar Shop. Before the bakery this building was known as the American House Hotel. Inside the bakery were delicious loaves of white and rye bread and cakes with colored frosting. Reasonable prices were 5 and 10 cents.



Inside the Bakery

It looks like someone had a party after working hours. The ovens were probably still hot enough to roast chickens. There is a large barrel next to the stove to hold firewood. The floor is bare wood. The men are wearing button shoes. The men are Roy Hoveman, Harry Koeper, Pete Merkle, Ed Allen, Joe Lanfersieck.



Washington Street - 1950

In 1950 we had a lot of snow. The blizzard of 1978 was also severe, but modern day equipment made it easier to clear the roads and sidewalks.



Schwieterman's Drug Store - 1970

The Drug Store was built in 1893 by J.L. Hoffman and sold to Urban Schwieterman in 1915 . It is interesting to know that the same contractor who built this building also built the large brick building in Lock Two known as Garmhausen's Store.



Schwieterman's Drug Store (after remodeling) - 1981



David Schwieterman

Son of Mr. and Mrs. Urban Schwieterman, he became a pharmacist in 1955.
The business has flourished and is one of the oldest in New Bremen.



Jeanne Braun at the Soda Fountain

The Drug Store had a small ice cream parlor with tables and chairs for folks to sit and enjoy an ice cream treat. You could buy hand-packed ice cream in snow-white containers with a shiny wire bail handle.



Rairdon's Barn

The Rairdon brothers purchased this site in 1898 to start a livery service. Within five years Lester Rairdon sold his interest to his brother Wilbur. The building was torn down in 1955 for the new post office.



View of Canal & Rairdon's Barn

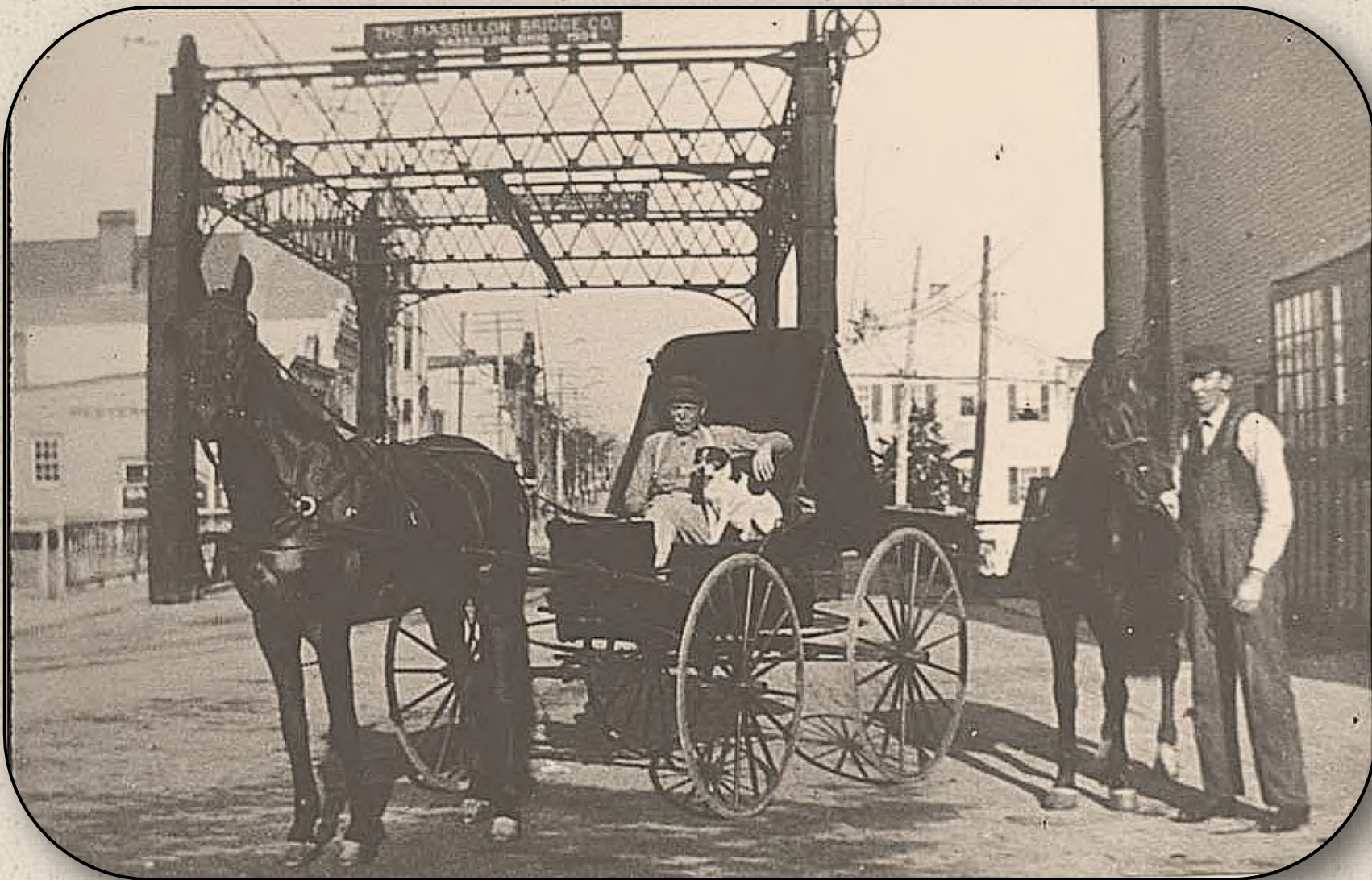
This is how the canal and buildings looked before the canal was flumed.



Monroe Street Lift Bridge

Rairdon's barn can be seen in the background.

New Bremen Now & Then - 1979-1983



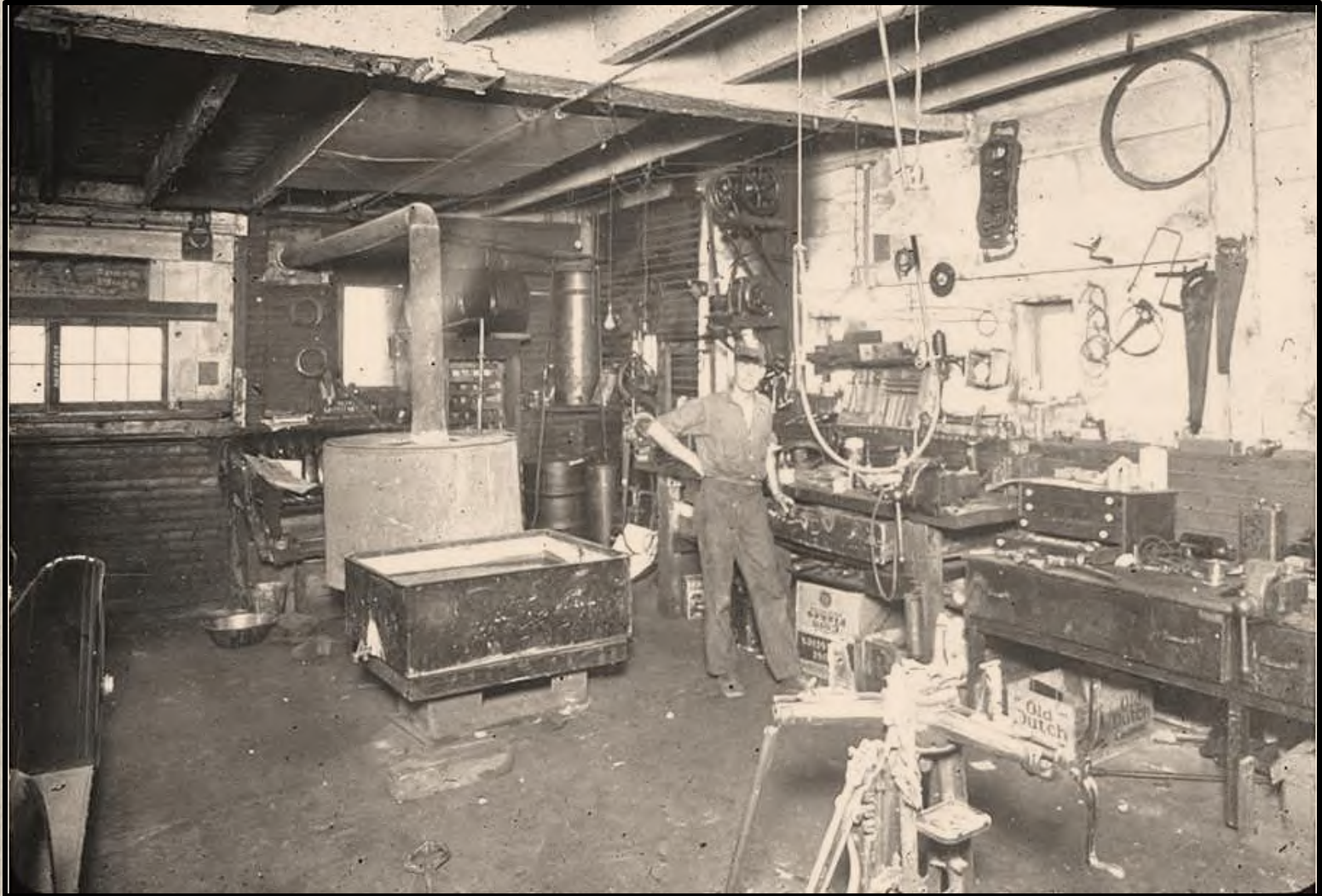
Intersection of Washington & Monroe Streets

Looking west down Monroe Street, we see the lift bridge over the canal.



Medicine Shows in New Bremen

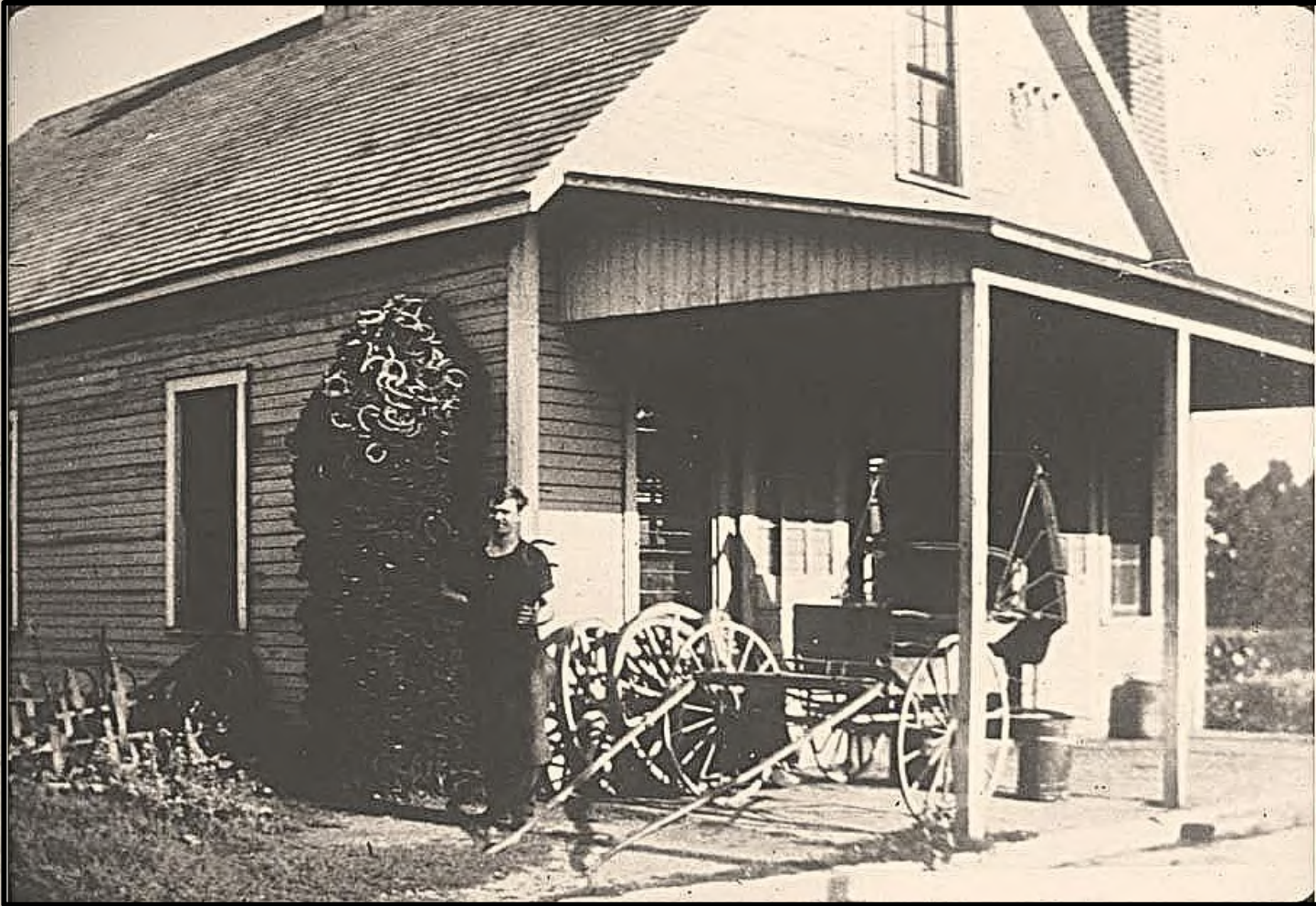
They parked their vehicle on the east side of Rairdon's barn, almost in front of Tony Schwieterman's blacksmith shop which is now route 66. Word spread like wildfire and a large crowd gathered as evening shadows fell. This is Chief Longfellow and Princess Redfeather. Their tonic was called Tanawa.



Rairdon's Garage

This is a picture of my Uncle Virgil Horn at work.

New Bremen Now & Then - 1979-1983



Anthony Schwieterman's Blacksmith Shop

Mr. Rairdon sold a small tract of land adjacent to his building to Tony for this shop in 1907.
The new shop opened in October 1908.



Blacksmith Shop in the Background

Jim Cooper is the dark haired fellow on the right.

New Bremen Now & Then - 1979-1983



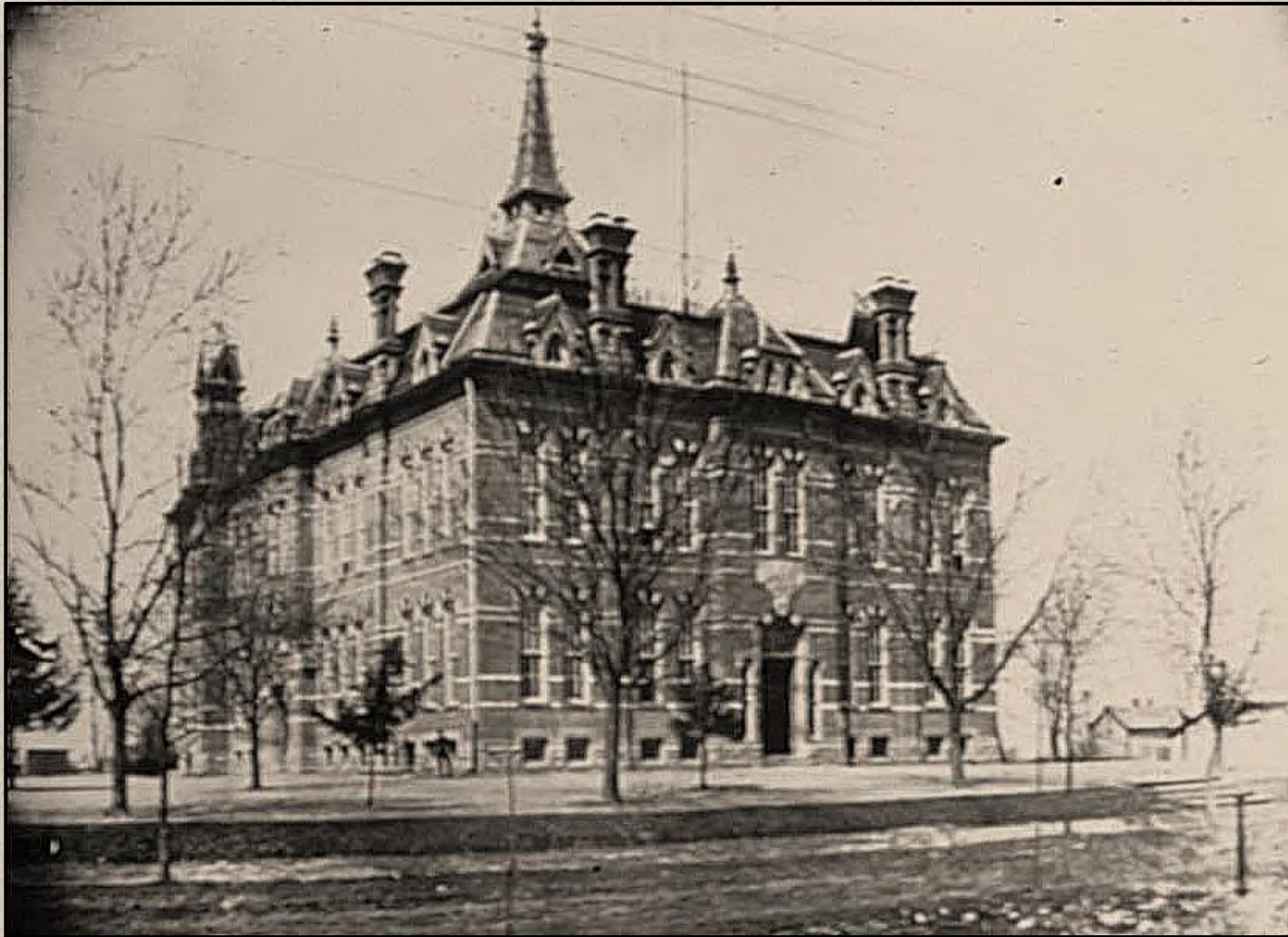
Post Office that Replaced Rairdon's Barn

It only served the community for five years and then was torn down to make way for the new Route 66.



Aerial View of Union (Central) School

Now we have left Washington Street and have gone across town. This is a view of South Franklin Street and the grade school. The building at the left with the "saw-tooth" roof is the former Auglaize Furniture Factory and later New Bremen Rubber Co.



Central (Union) School

In April 1876, it was decided to build a suitable school house for the community.
This building was completed on March 5, 1878 at a cost of \$17,460.07.

New Bremen Now & Then - 1979-1983



1910 View of School

This photo features the school house in the background with Mr. William (Bill) Gilberg and nephew Paul in the buggy.



Winter Storm During 1929-1930 School Year

A severe ice storm caused power lines to come down. Trees fell over from the weight of the ice. School was dismissed for a few days because the classrooms were so dark without lights.



Early Postcard View of School House



Photo of School by Paul Lietz

This photo shows the fire escapes. During the hot weather in early fall or late spring the teacher would open the fire escape door for extra air. When the fire alarm rang for practice drill, it was an escape from studies.



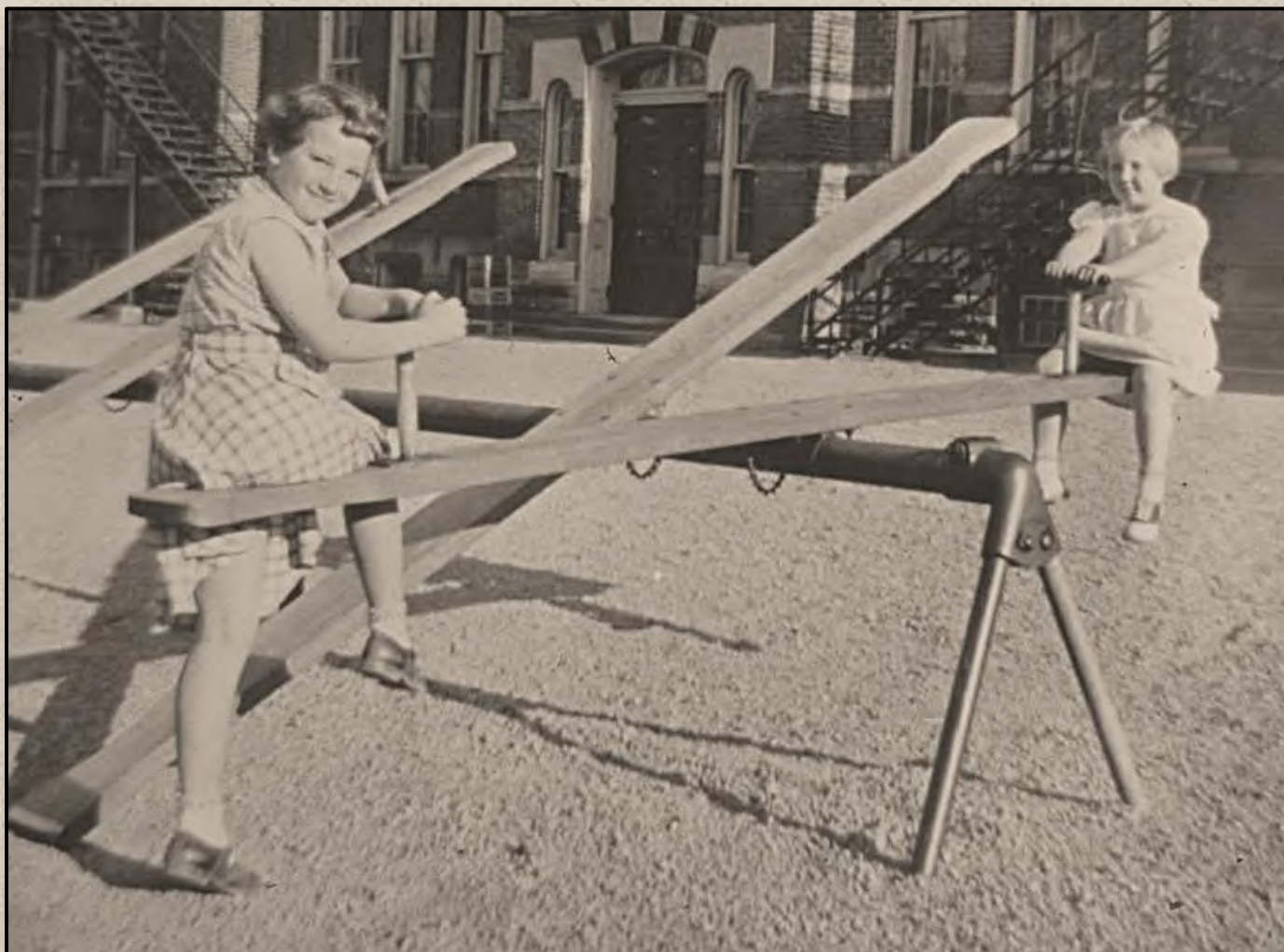
Early New Bremen School 1846-1878

This building on North Franklin Street was built in 1846 and served as a one-room school. Later a room was added on the north side. It was remodeled into a home after the Union School was built in 1878.



Teacherage Built in 1908

This building was erected on South Herman Street to relieve crowded conditions in the school. It was first used for grades 7 & 8, later grades 1 & 2. In 1920 it was remodeled and used to house the Superintendent and the other half was used as a community room. It is now a private home.



Teeter Totters

The playground had teeter totters, slides, giant strides, swings and monkey bars for the children. Pictured are Becky Campbell and Joyce Ruedebusch.



The Slide

When we were little the slide was located on the southeast corner of the school lot. To make the slide slick, the children hunted through the trash baskets to find a sheet of waxed paper. Paul says he remembers that some of the salvaged paper had jelly on it.



The Swings

We stood on the swing seat, facing each other and pumped until we could almost reach the clouds, it seemed. Then we let “the old cat die...”. Pictured are Joyce Ruedebusch and Becky Campbell.



Giant Strides

This picture was taken in 1918 when Annabel Wagner was in the 2nd grade. The playground equipment was called Giant Strides. We ran through the gravel holding one of the bars, lifted our feet and sailed through the air.



Early Central (Union) School Class Picture

Leota (Fark) Busse's mother is pictured on the right side.



1913 New Bremen School Picture

New Bremen Now & Then - 1979-1983



High School Built in 1918-1920

This building stood on the northwest corner of the school lot at the corner of Poplar and Herman Streets. It was not very large and soon gained the name of "Cigar Box." It was built on quicksand , condemned and torn down in 1930.



High School Opened January 1930

In 1929 a bond issue for \$80,000 was approved to build a new high school.

Three lots were purchased from Christ Church for the building.

It was designed by F. E. Freytag of Sidney at a cost of \$60,525.



Elementary Building Added in 1956

New Bremen voted a \$490,000 bond issue for a new grade school. Grades Kindergarten, 1 & 2 moved in on September 27, 1956. The next day grades 3, 4, 5 & 6 moved in. A total of 365 students moved with the help of teachers, bus drivers and high school students.



Another Addition to the High School

The New Bremen High School needed more room so an addition was added to the front of the building.

New Bremen Now & Then - 1979-1983



New Bremen Schools

New Bremen Now & Then - 1979-1983



New Bremen Elementary School - 1981

It was open house at the school and the windows are gaily decorated.



School Buses

September brought the school bell, a lunch bucket with summer sausage sandwiches, a game of marbles, a jump rope, a ball game and back to school.



Dinosaur Made By Student

At one time the only subjects taught in school were reading, writing and arithmetic. Perhaps those subjects were enough at that time. However in 1983 we are living in a space age, an age of computers, radio and TV and many subjects must be taught.



Miniature Houses Made By Students in 1983

This teacher was teaching 1833 to 1983 New Bremen history and had the students replicate buildings.



Back to Central (Union) School on Franklin Street

New Bremen Now & Then - 1979-1983



Tearing Down the School

STAMCO bought the old grade school and tore it down. I am sure there were many mixed emotions about the razing of the old school house, but each generation takes care of its own in the way they see best.



Tearing Down the School

New Bremen will long remember the old Central (Union) School building with the ball field, playground, water fountain bubblers on the southwest corner, the basement windows under the fire escapes where one could play marbles. I remember as a 1st grader marching out to the front sidewalk to the music of an old Victrola...



Tearing Down the School

Down came the roof truss. Hard working hands fashioned this part of the building and it served its purpose well. The third floor or attic was never used except for storage because the state department refused permission.



Tearing Down the School

Folks from all over town came on Sunday afternoons to check the dismantling progress. They visited, told each other school stories, took pictures and then went home to wait another week.



Silent Bricks Looked Like Ghosts of the Past

If you listened carefully, you could hear the small footsteps in the hall or the closing of the shutters on a sunny day.



Tearing Down the School

Finally all that was left was a small pile of bricks. The beautiful Central (Union) School became a vivid memory in the history of New Bremen.



Central (Union) School Steps

Elaine and Karen Conradi are pictured.

New Bremen Now & Then - 1979-1983



Central (Union) School Location

The school faced east on South Franklin Street and took up most of the block.

In 1979 this location is Stamco's parking lot.



Cottonwood Tree on School Grounds

The tall cottonwood tree still standing in 1983 is like a sentinel. If you close your eyes and listen to the rustle of the leaves, you can hear the shouts of laughter of the boys and girls at play. It's recess time, but remember it is only a dream.



School Grounds at Dawn

As the sun comes up each morning and shines on the old schoolyard, it reminds us of changes that will come with each generation, because people have dreams and ideas for improving the town they love. And now Paul and Marge Lietz of New Bremen will say goodbye.



A New Bremen Cardinal

New Bremen Now & Then - 1979-1983